

function

With the development of the X-ACT series, SCITEQ takes airless pressure testing to an even higher level with the DPCS control system. SCITEQ offers a high-tech small footprint stand alone solution to large numbers of test samples. Pressure testing may be performed in accordance with for instance ISO 1167, ASTM 1598 and ASTM 1599.

highlights

- high accuracy pressure control
- high level dynamic control
- online support via safe internet connection
- high quality components
- easily accessible service components
- unique design
- high flexibility
- graphic overview of pressure stations

features

SCITEQ's intelligent Dynamic Pressure Control System ensures that test pressures are maintained with unparalleled accuracy no matter what size sample is connected to the system. With or without PC-SCITEQ software, the system offers the user an intuitive easy-to-use colour panel.

One of the many features of the X-ACT series is the possibility of **online support** via safe internet connection. This means that upload of software updates, trouble shooting as well as remote control of



BASE unit with 2-5 independent stations

We wish to give our partners the tools to produce to the highest standard, while helping them to produce as cost-effectively as possible with Q.C. tools throughout the factory.

construction

The **BASE** unit is an all-in-one pressure testing unit with integrated high pressure pump and up to 5 independent pressure stations which means that you have everything needed to perform pressure testing with one unit.

The **BASE** unit is intended to be used as a stand-alone unit that may be placed on top of a table.

There are two main models depending on the requirement for max. pressure, namely for up to 100 bar and up to 160 bar. Each unit may have from two up to five individual pressure stations. This unit has been developed for those only needing a few pressure stations.

Each station is operated using a dedicated controller unit, S40, with colour display and multi-function push buttons. The operator can view/adjust all parameters. Each controller has a separate power switch. For documentation purposes, PC SCITEQ software is available (option) which provides a range of additional features. More information is found in the brochure on PC SCITEQ software.

associated | equipment | essential equipment

thermo tanks

end closures

hoses

pc-sciteq software

laboratory saw

standards

Tests with **SCITEQ** X-ACT BASE unit complies with the below standards. Referring national, or sub standards referring to the below and others on request .

standards

Long term test:

ISO 1167-1:2006

ASTM D1598-02

Short term test:

ASTM D5199-99

Harmonized standards:

EN ISO 12100-1

EN ISO 12100-2

EN ISO 13849-1

EN ISO 14121-1

EN ISO60204-1

Normative references:

Machinery Directive 2006/42/EC

EMC Directive 2004/108/EEC

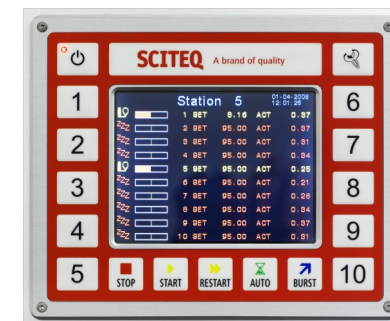
Low voltage Directive 2006/95/EEC

technical purpose

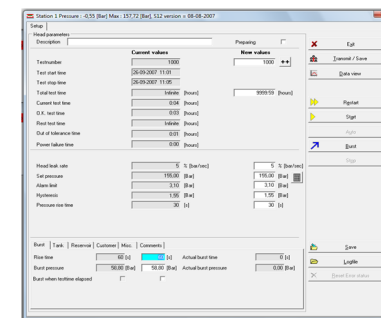
SCITEQ X-ACT BASE module is for testing and determining the resistance (both long term and short term) to internal pressure on thermoplastic pipes, fittings and assemblies for conveyance of fluids. The product design comprises of two models:

- Up to 100 bar BASE unit with up to 5 individual pressure stations
- Up to 160 bar BASE unit with up to 5 individual pressure stations
- Flow per station : Max. flow 2 l/min

Other SCITEQ modules up to 200 and 250 bar, please contact SCITEQ A/S for more information.



User-friendly and easy-to-operate colour panel



Interface from PC-SCITEQ software



high pressure hoses (accessories)



end closures model 1520 (accessories)

technical specifications

Capacity	up to 5 individual pressure stations in one unit with integrated pump system
Output—two models	up to 100 bar BASE unit up to 160 bar BASE unit
Transmitter range	6, 10, 16, 25, 40, 60, 100, and 160 bar
Transmitter accuracy	NLH @ 250C +/- 0,2% FS typ. TC zero point and span typ. +/- 0,03% FS/K typ. Long term stability 1 year typ. < +/- 0,2% FS typ.
Control accuracy	Better than +/- 1% of set pressure
Analogue conversion	12 bit analogue conversion => 0,03% of transmitter range
Resolution	0,01 bar
Drain	Lead to gravity fed waste water, Ø10mm hose
Dimensions	730x550x755mm (LxWxH) (including feet)
Weight	130 kgs (100 bar) 170 kg (160 bar)
Operational temperature	Max. 37 °Celsius Indicated transmitter accuracy prescribe 25°C +/-5°C
Air humidity	Between 30-70%
Electrical supply	100 bar: single phase 230V, 50 Hz (TN-S) 160 bar: 3 phase 380-400Vac + N + PE, 16amps
Water supply	Normal tap water supply max. temperature 17° Celsius Pressure min. 2 bar and max. 6 bar Min. flow 10l/min 3/4" pipe
Filter	Built in 10 micron inlet filter

SCITEQ A/S

Rho 3
DK-8382 Hinnerup
Denmark
Tel: +45 86 96 19 33
Fax: +45 86 96 24 75
www.sciteq.com
sales(at)sciteq.com