

SCITEQ

SIGMA Software



We help you perform even better

SIGMA pressure

SIGMA is the new generation of pressure testing helping our customers prepare for IoT and Industry 4.0.

The system consists of modular airless pressure modules designed to fit into an elegant standard cabinet with a compact footprint. The modularity enables easy configuration and extension of existing pressure cabinets, making SIGMA the most future proof and cost efficient solution in the market.

The web based SIGMA user interface is the latest development in pressure testing. The browser based interface allows for easy and intuitive operation.

Quick-setup of recipes as well as optimized real time monitoring & logging enabling comprehensive analysis option.

Features

SECURE REMOTE ACCESS

It is possible to update and service remotely via the internal Ethernet and/or external web access. The encrypted VPN and integrated firewall incl. in the site manager ensures a secure remote access.

COMPATIBILITY

SQL database compatible with any server, enabling unlimited access and processing/use of test data.

PREDICTIVE MAINTENANCE

The SIGMA solution offers preventive maintenance system ensuring on-time maintenance and replacement of parts due to wear and tear. In case parts needs changing, this can easily be sourced via SCITEQ online spare part shop with individual customer login. Furthermore, the included self diagnostic system enables fast and easy troubleshooting in case of irregularities.

[Link to SIGMA video](#)





Advantages

SCITEQ's browser-based user interface is accessible from any device – any time, anywhere.

- ✓ 4 different user levels
- ✓ Easy recipe set-up
- ✓ Dynamically adjusted real-time finish time
- ✓ Multiple simultaneous users
- ✓ Multiple specimen test per station
- ✓ SQL database compatible with all server types

About SIGMA interface



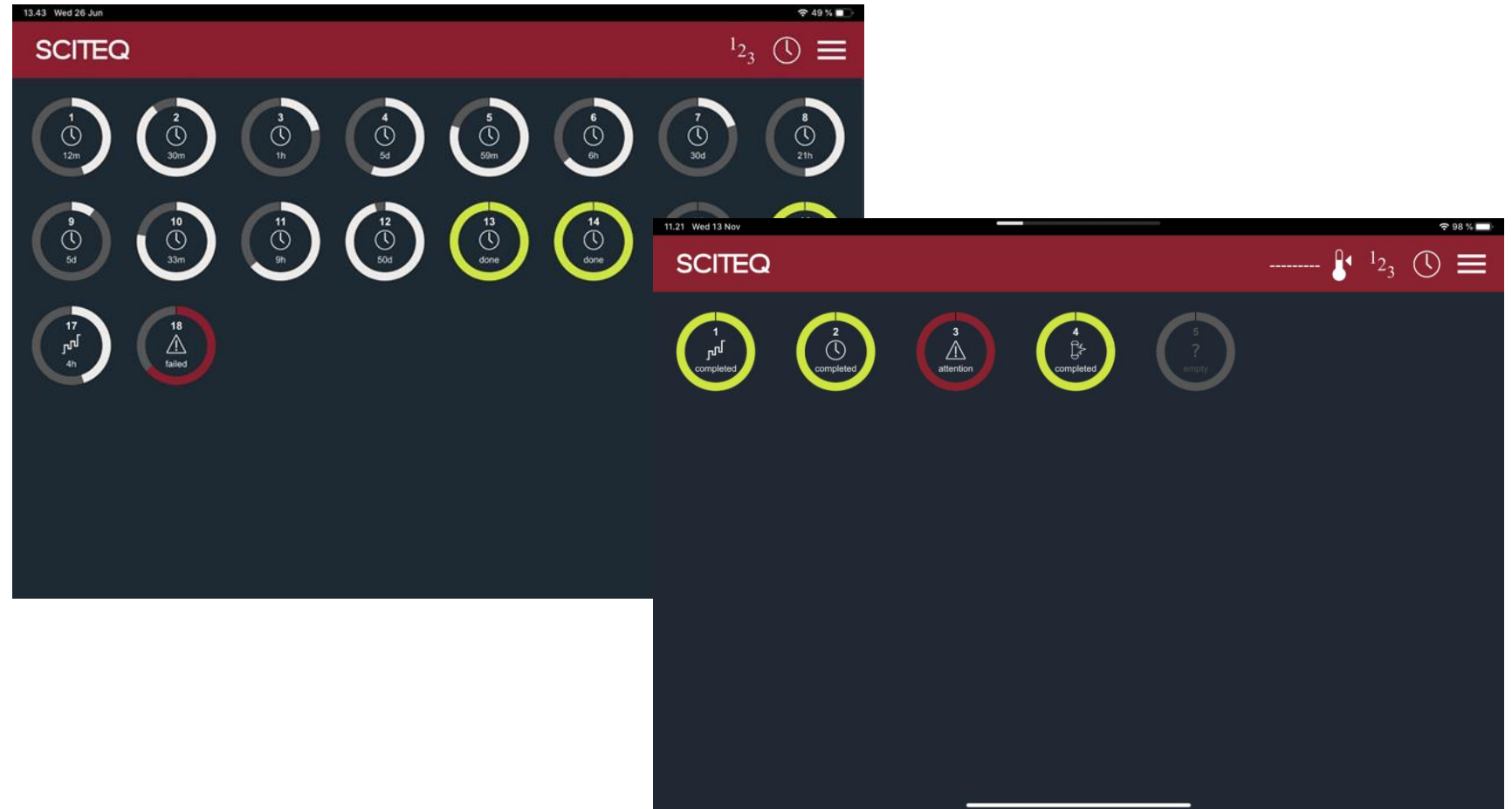
SIGMA 'One page overview'

The "One page" overview provides full view of all stations, showing ongoing tests listed in order ranked according to 'attention urgency'/time left to completion.

Optimized for touch

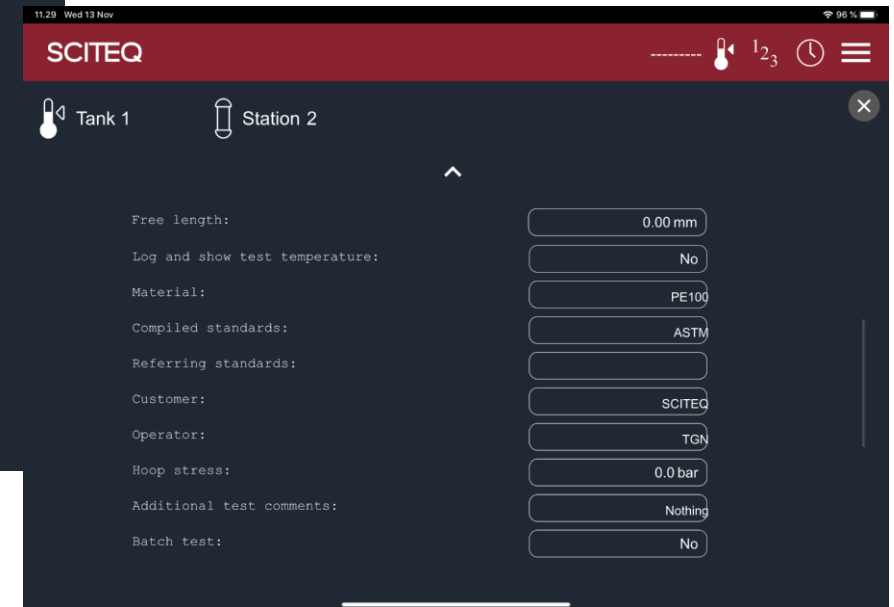
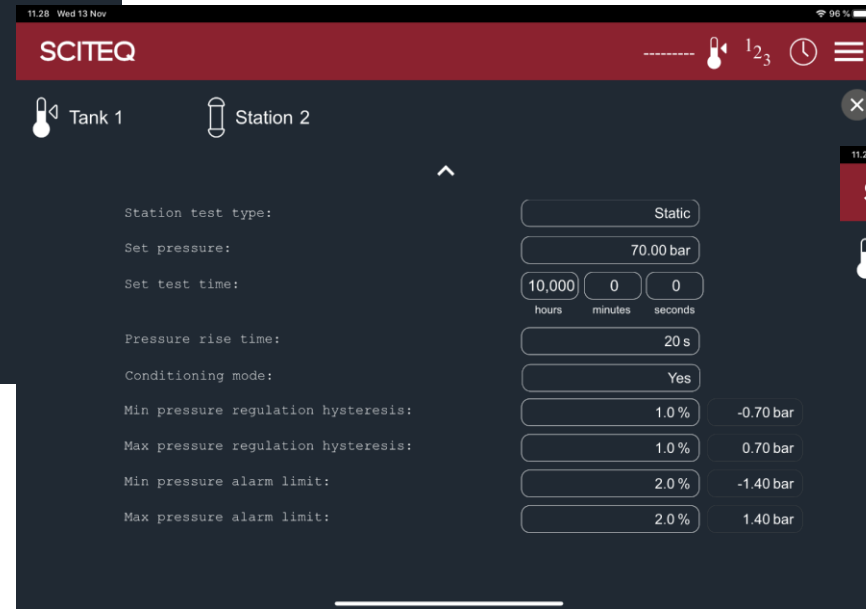
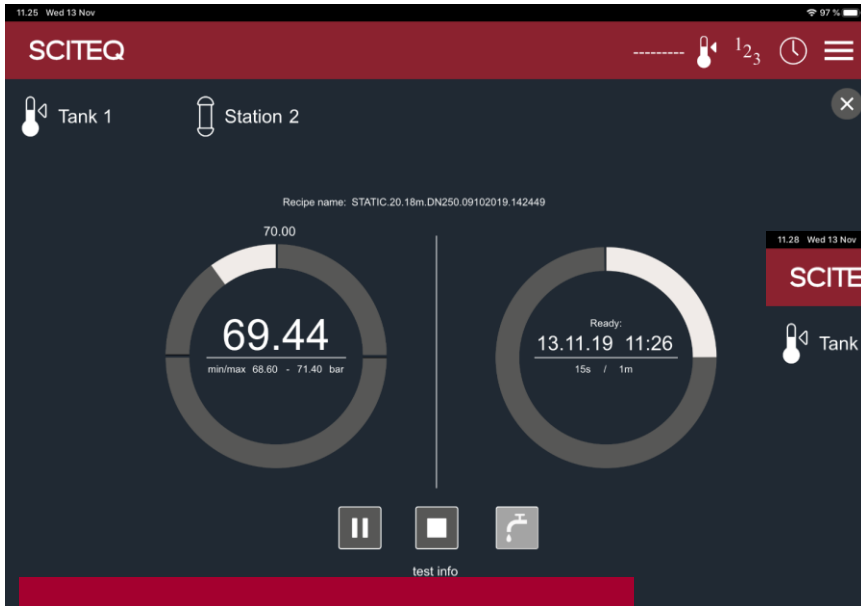
The interface is optimized for touch, but can also be operated with mouse & keyboard.

SCITEQ recommends the use of an iPad pro 11" in shock and water proof cover. This is offered as option for SIGMA pressure installments.



About SIGMA test overview

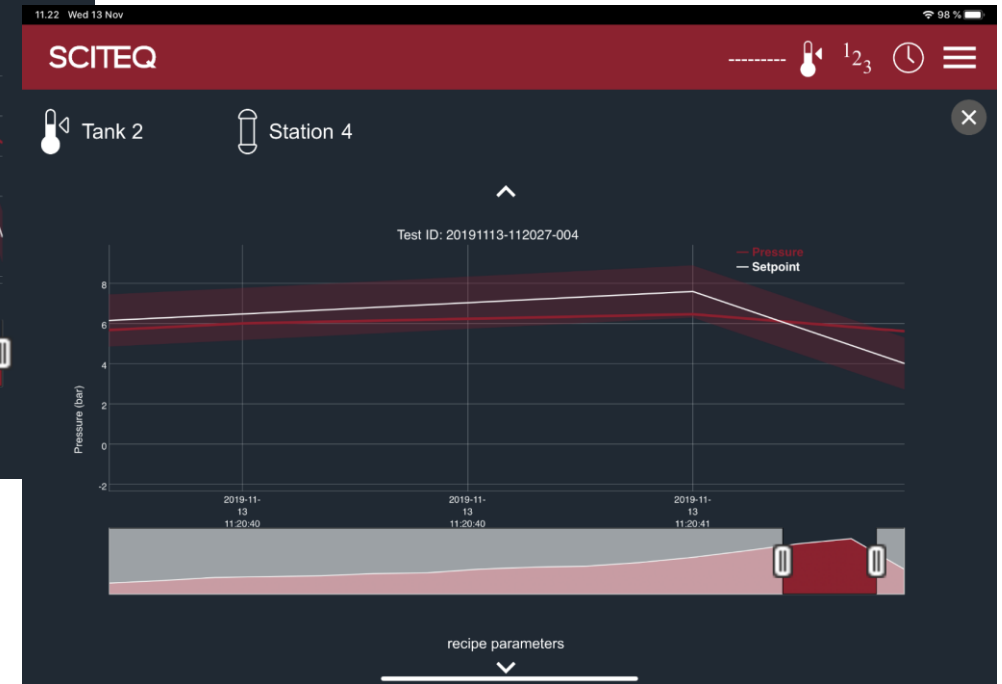
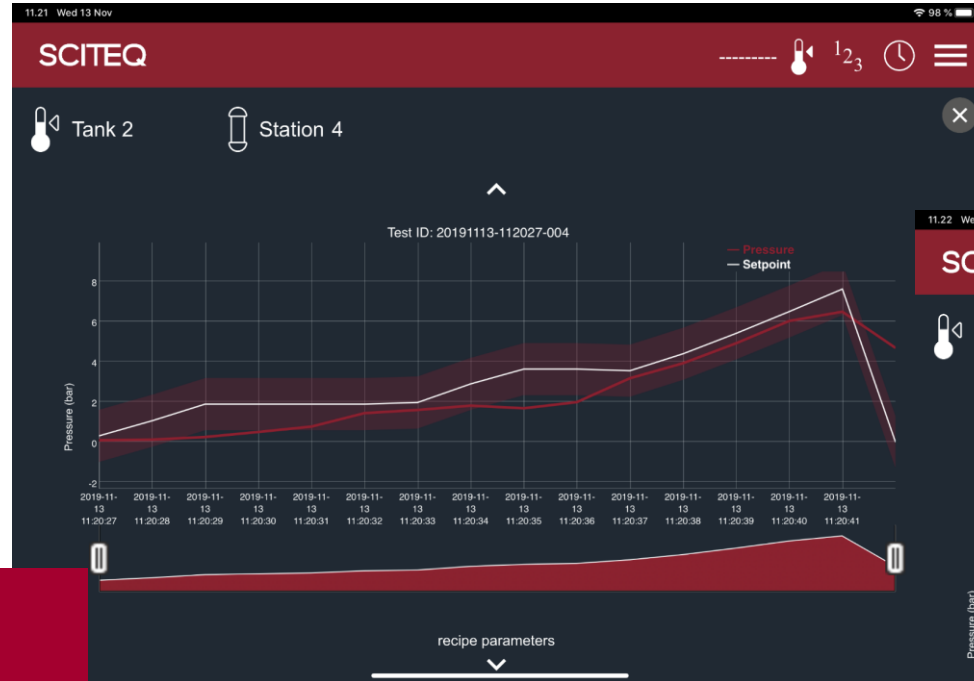
SCITEQ



All data at hand

With SIGMA you will have a the full view of ongoing tests with all real time data and recipe parameters conveniently shown in one screen.

About SIGMA test overview



Graph

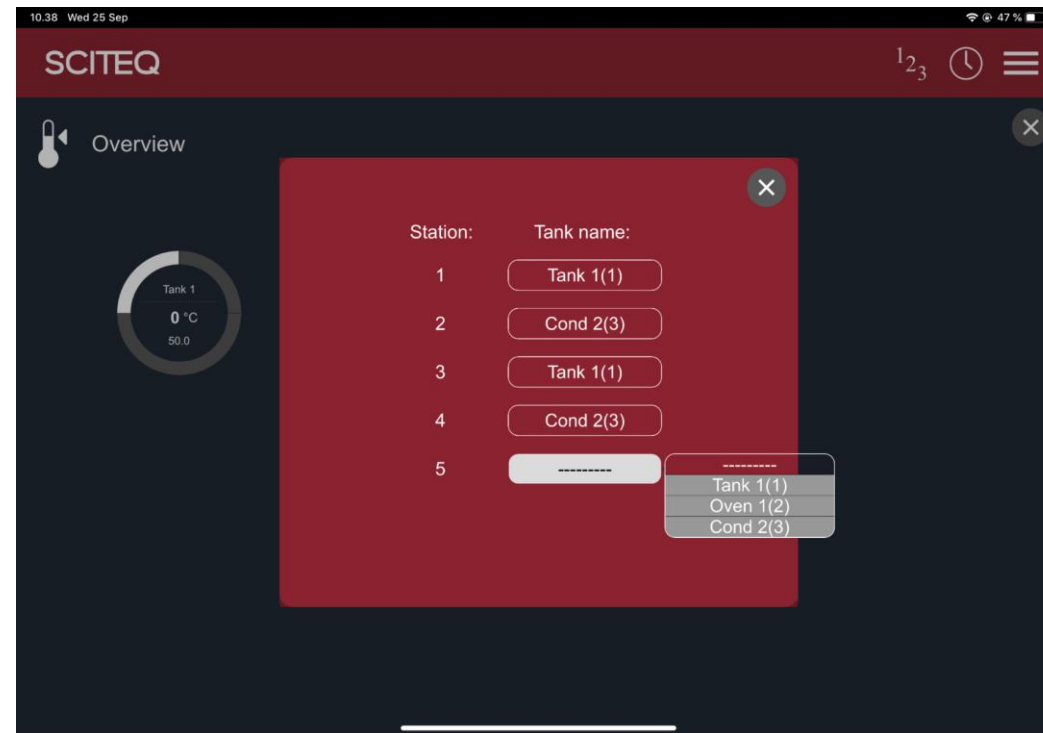
With SIGMA you will have a the full view of ongoing tests with all real time data conveniently shown in one screen.

SIGMA & thermo tank

SIGMA will display the different thermo tanks and the assigned pressure stations/test in the overview.

Optimized for touch but can be used with mouse/keyboard as well. We recommend and offer IPAD pro 11" in shock and water proofed cover/case.

"One page" station overview showing the test stations that need most urgent attention.

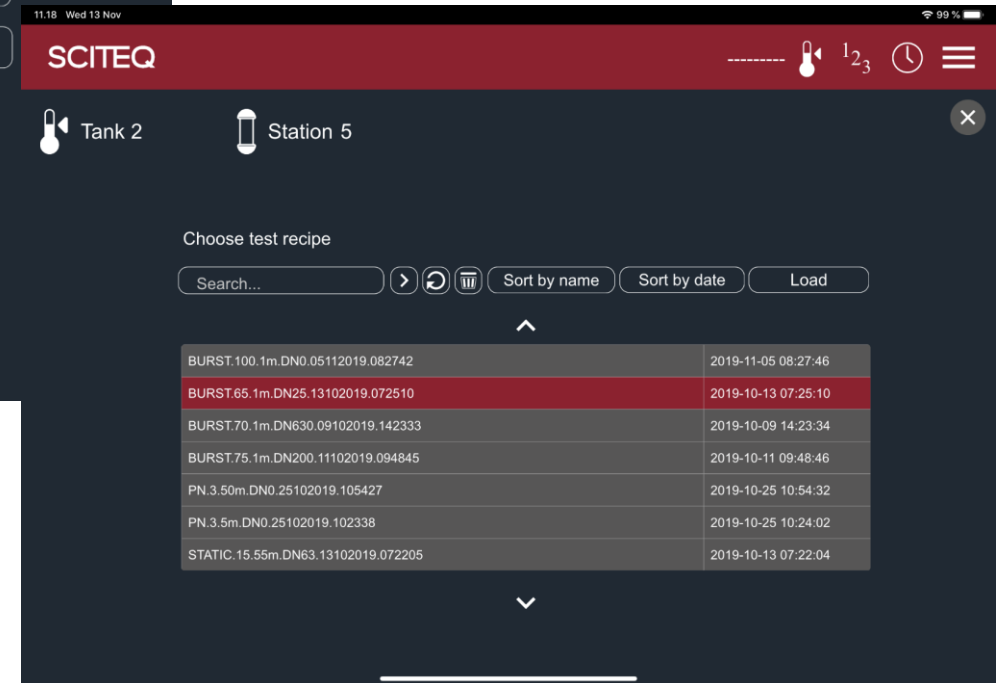
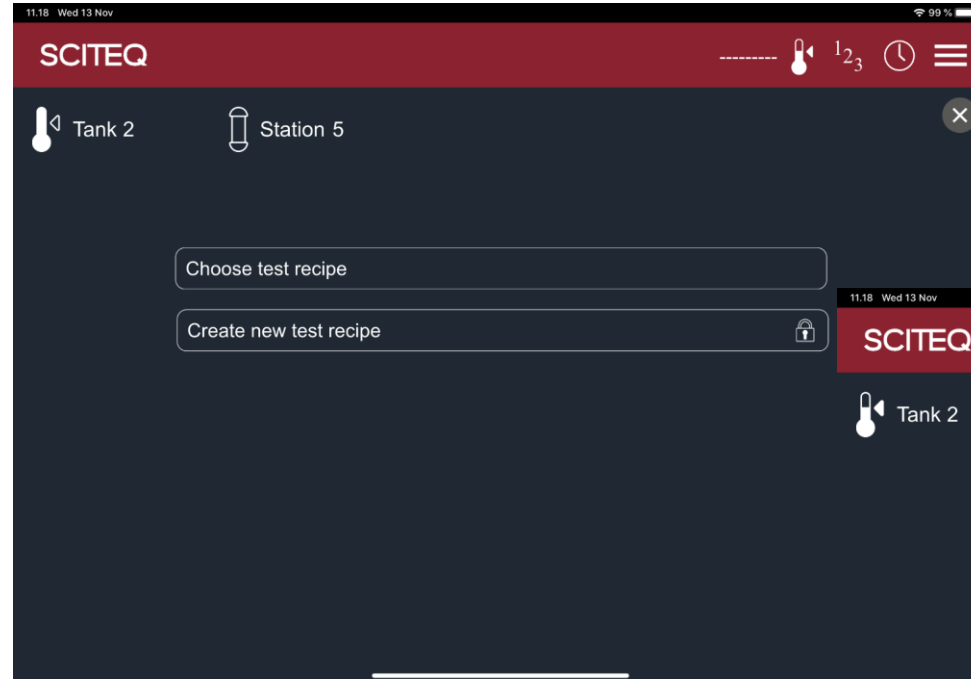


SIGMA Recipe

The recipe system enables user to create, export and import recipes customized for a specific test.

Recipes are quick and easy to set-up, saving you time when initiating or repeating tests based on previous test parameters.

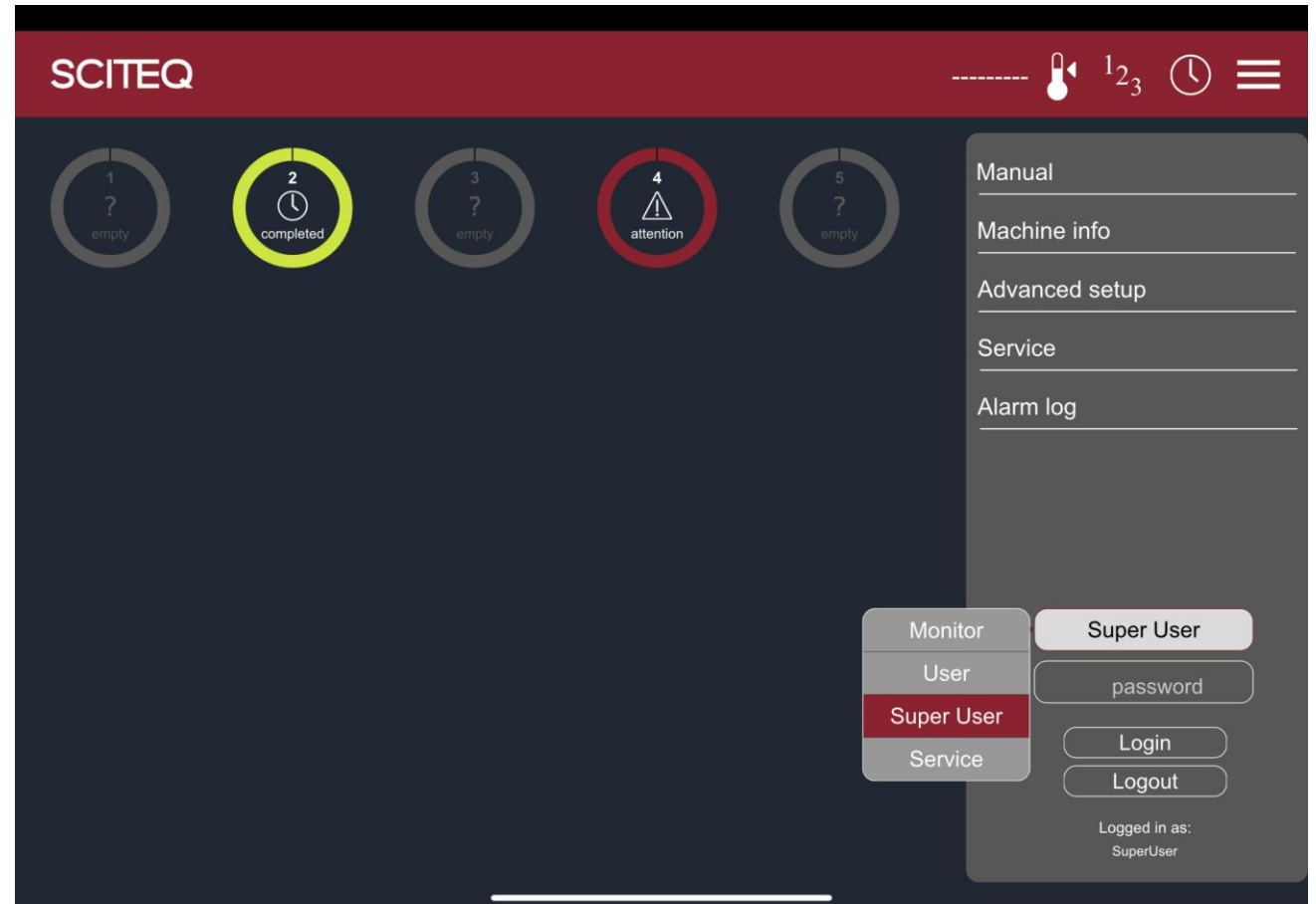
When a recipe is created a test can be started with only four click.



SIGMA User levels

The default settings of the four different user-levels from Basic to Advanced ensure convenient and quick start up as well as individual access levels. A view-only access is also included, allowing stakeholders to monitor the entire process remotely when needed. The four levels are:

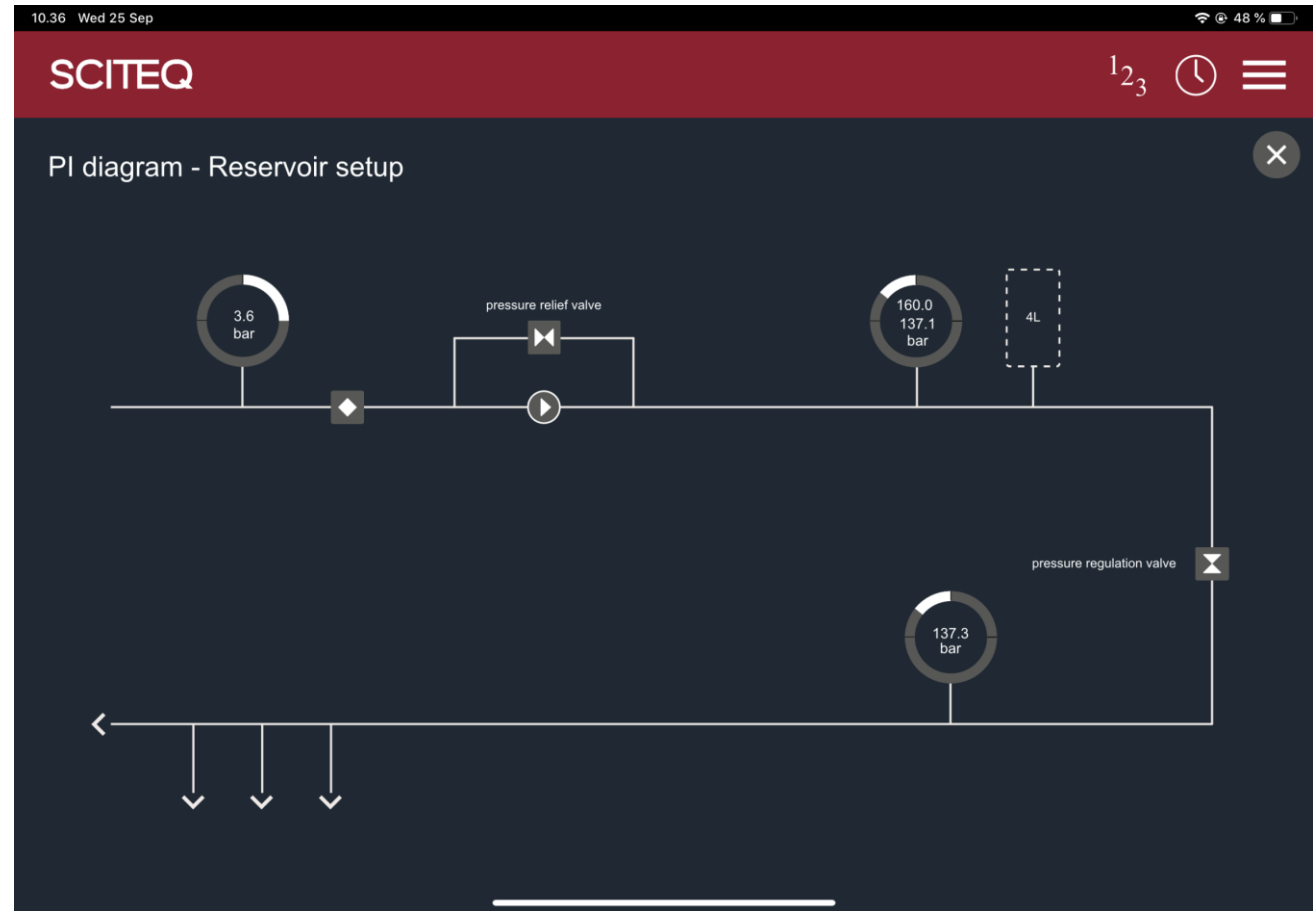
- ✓ Monitor: Only monitoring
- ✓ User: start and stop of tests
- ✓ Super User: all functions excl. calibration and adjustment of pressure regulation.
- ✓ Expert User: all functions excl. calibration



PI diagram

PI diagram provides an overview of the reservoir setup and the components of the pressure test system.

The diagram will also conveniently show any irregularities enabling easy troubleshooting.



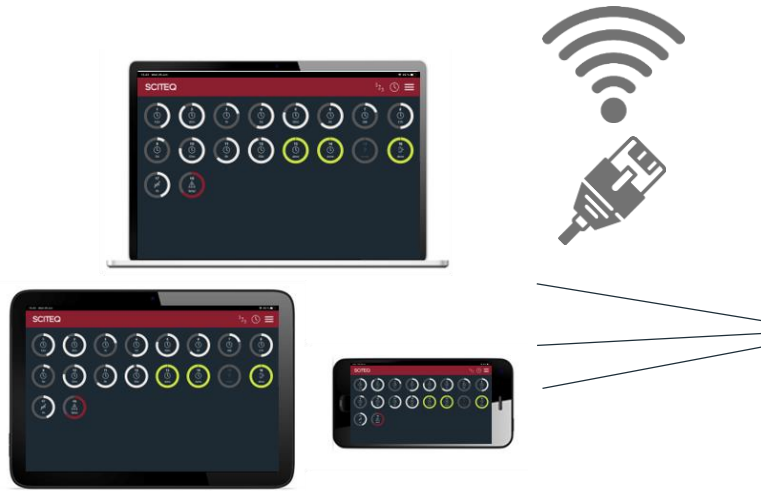
SIGMA predictive maintenance

The SIGMA solution offers predictive maintenance system ensuring on-time maintenance and replacement of parts due to wear and tear. In case parts needs changing, this can easily be sourced via SCITEQ online spare part shop with individual customer login. Furthermore, the included self diagnostic system enables fast and easy troubleshooting in case of irregularities.

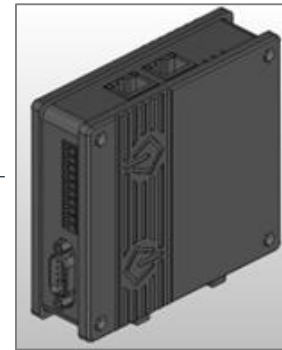
- ✓ Solve irregularities in time
- ✓ Maintenance & cleaning of parts in time
- ✓ Replace parts in time
- ✓ Calibrate in time (calibration is done by SCITEQ service engineers)



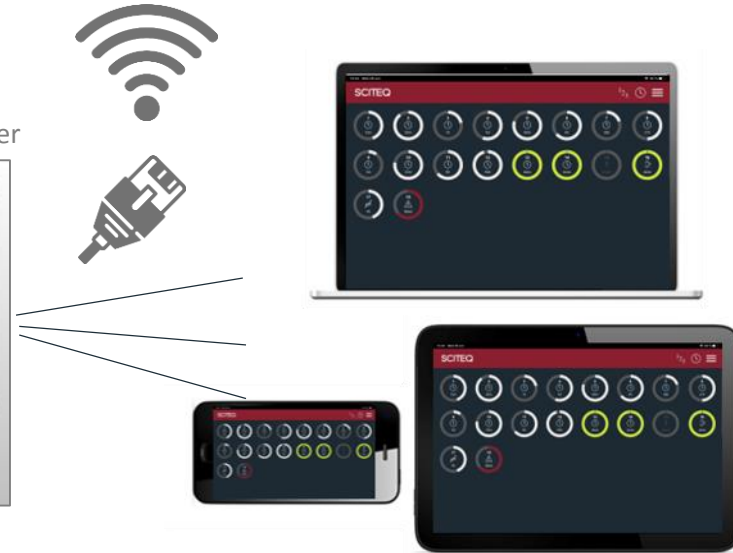
Local ethernet/wifi



Sitemanager
embedded in controller



World wide web



Get connected

The SIGMA UI is optimized for touch screen of 11" and with a resolution of 2388 x 1668 and can be entered from a large range of web browsers such as Edge, Chrome, Safari, Firefox, Explore etc. We recommend using an APPLE IPAD PRO 11" to get the full user experience of the UI. The software does support other browser-based devices, however performance may vary.

The UI software is preinstalled before on the SIGMA pressure equipment

	SIGMA Software/user interface
One page pressure station overview	√
Controller type	SCITEQ-B&R Controller
Intuitively and user friendly user interface	√ User interface is designed with focus on minimizing numbers of clicks and reducing complexity
User interface*	Chrome, Firefox, Edge, Safari, Internet Explore browser or similar.
User interface control	Optimized for touch screen, but useable with standard mouse and keyboard setup.
Multiple, password protected, user levels	√
Programmable test recipe's	√
Recipe library memory	At least 5000 unique recipe's
Recipe smart search function	√
Recipe download/upload	√
Secure remote accessible**	√
Dynamic test finish time estimate	√
Remote software update service incl. ***	√
Cloud/server backup	√ Database can be mirrored to multiple types of cloud/web storage services or external/internal servers
Test & recipe database system	SQL
Database storage memory	Approx. 100 GB of free memory for test/recipe data

*SCITEQ is recommending the use of IPAD PRO 11", or similar with screen resolution:2388x1668

	SIGMA Software/user interface
Real time pressure/temp/time –curve	√
Test modes	Static pressure, Burst and Step test
Bleed/water filling function	√
Thermo tank specified station overview UX	√ SIGMA can be set up to only show the stations designated each thermo tank, meaning there will be a controller located with each thermo tank only showing the stations assigned for this tank.
Batch test mode*	√
Real time system P-I overview	√
SCITEQ machine error diagnose	√
SCITEQ preventive maintenance system	√
System alarm/error log	√
Post power failure auto resume	√
Max. quantity of simultaneous users	3
Internal password protected WIFI connection	√ 2,4 GHZ and 5 GHZ
Temperature interface	√ Up to 10 internal or external conditioning systems can be controlled/logged from SIGMA
Required connection	Preferable web access, but system can run offline
Max. pressure station quantity**	100 as standard

*SCITEQ is recommending the use of IPAD PRO 11”, or similar with screen resolution:2388x1668

	SIGMA Software/user interface
Test data output	SCITEQ test report, CSV, XLXS, PDF, SQL output and similar
UX accessible by cabled connection	√ RJ 45 Ethernet and DVI
Controller power supply	24 V DC, but supplied by SCITEQ SIGMA Pressure Cabinet



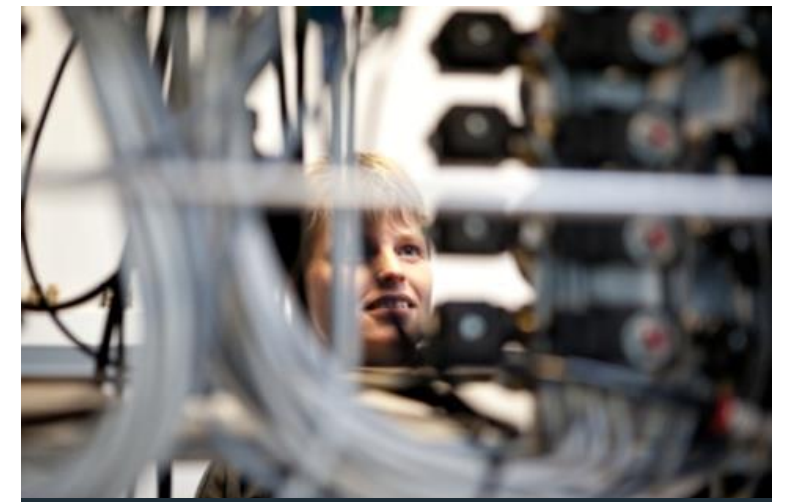
Installation & training

SCITEQ's trained service technicians perform onsite installation of your new SCITEQ equipment as well as onsite or remote training of your operating personnel who will be using the equipment.



Service agreements

With a SCITEQ service agreement you can rest assured your equipment will perform 100% all the time. Specialized service engineers will visit you annually to perform the best service and calibration. You can always liaise with your SCITEQ service technician when in need of advice, looking for new solutions or trying out new equipment.



Support online & on-site

SCITEQ offers online and on-site support on all SCITEQ products, for fast and effective problem solving, training, setup, etc. If you have an unforeseen challenge or you need advise asap, you can contact service@sciteq.com or call us for urgent support.